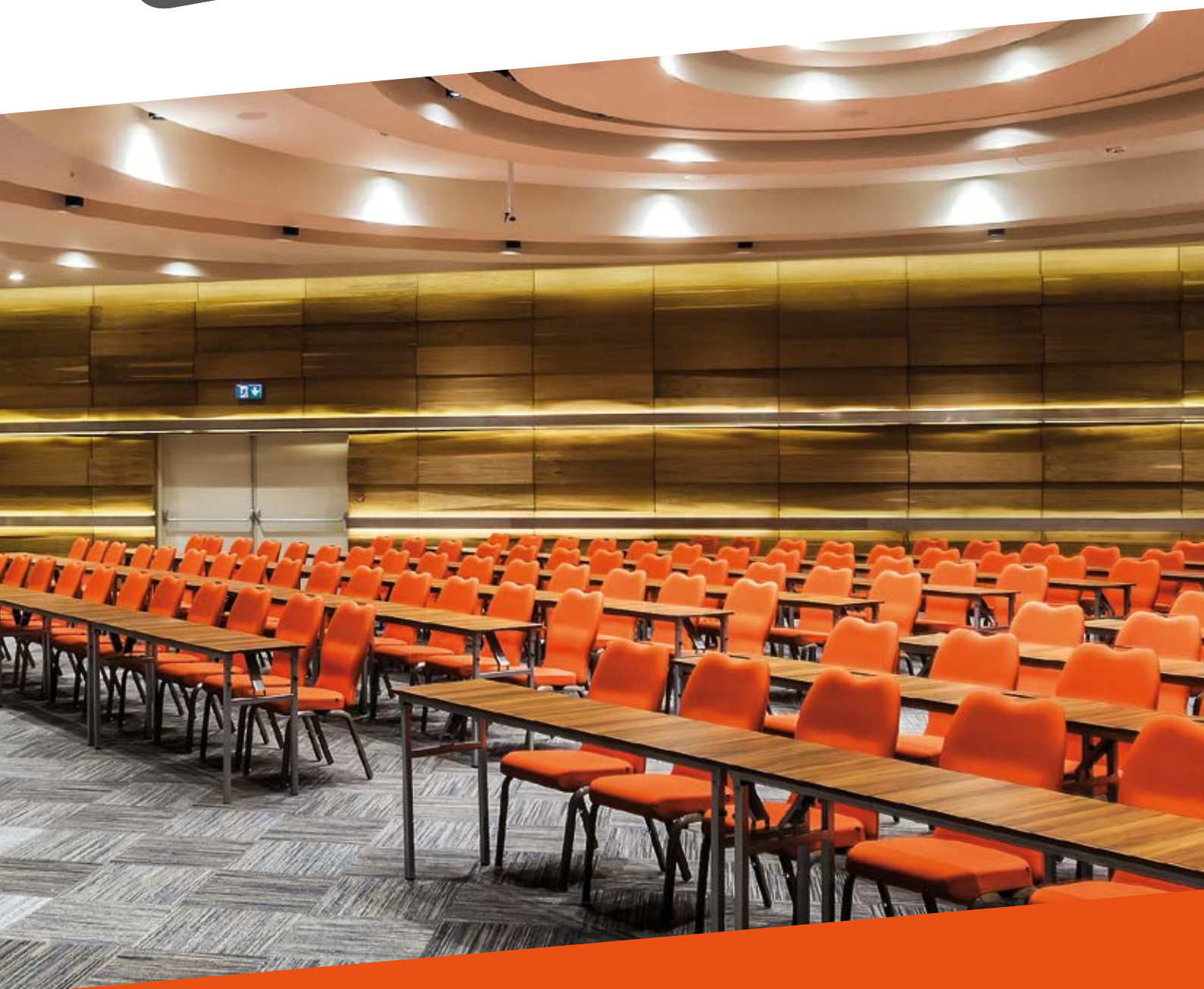




me:
meetings
and events
danubius



Plan
your meetings
with **me:**

HUNGARY
UNITED KINGDOM
danubius.me

Hungary

BUDAPEST	
Danubius Hotel Helia****	10
Danubius Hotel Arena	12
Danubius Hotel Hungaria****	14
Danubius Hotel Gellért	16
Danubius Hotel Astoria****	18
Hilton Budapest	20
Radisson Blu Béke Hotel****superior	24
GYŐR	
Danubius Hotel Rába***	30
BÜK	
Danubius Hotel Bük****	32
BALATONFÜRED	
Danubius Hotel Annabella***superior	34
Danubius Hotel Marina***superior	36

Great Britain

LONDON	
Danubius Hotel Regents Park****	38



It's a new **me:**



Turbocharge **your event!**

- ✔ **expert staff** years of experience
- ✔ **carefully designed meals** healthy refreshment and lunch breaks
- ✔ **a wide choice of venues** renovated hotels
- ✔ **integrated conference technology** Danubius AudioVisual
- ✔ **collectme:** loyalty programme



me:
meetings
and events
danubius

Hello, it's **me:**
Zoltán Tóth
your chef

”Whether you’re an angler going after that Big Fish, or a chef running a well-oiled kitchen, it’s always the same three ingredients - **discipline, creativity,** and **harmony** - that make the **difference.**”

Good food for **me:**



Our **“Good Food for me”** catering selection includes a broad range of options to keep your event participants’ minds fresh and meet their individual needs. As an event planner, you can put together an assortment of dishes appropriate for those who are lactose or gluten-intolerant, require sugar-free fare, or have any other special dietary requirements. At Danubius, there’s no problem we can’t solve!

danubius.me

me:
meetings
and events
danubius

It's time for Coffee



Explore *Budapest* with **me:**

FASCINATING HISTORY AND
OPULENT ARCHITECTURE



SPA CAPITAL OF THE WORLD
THE PEARL OF THE DANUBE



TOP-CLASS MUSIC & ART
PERFORMANCES

HUNGARY

GRAND BOULEVARDS AND
QUIET COURTYARDS



BREATHTAKING LANDMARKS

DANUBIUS HOTEL HELIA****

Choosing the right venue is half the battle won! Our conference hotel with lifestyle vision is a popular Budapest event venue: the conference floor features 9 air-conditioned conference rooms with natural daylight equipped with the latest technical facilities to guarantee your event is a success – whether it’s a conference, social gathering or exhibition.

- ✔ **A place where you can mix business with relaxation! Conference hotel with a spa and wellness complex on the bank of the Danube, opposite Margaret Island.**
- ✔ **Steer clear of the traffic jams! Spacious car and bus park just outside the hotel.**
- ✔ **An ideal place for conferences to take fantastic day cruise excursions, departing directly from outside the hotel entrance.**

GUEST ROOMS

Number of rooms: **262** • Standard double rooms: **30**
Standard twin rooms: **56** • Double rooms with Danube view: **68** • Twin rooms with Danube view: **96**
Superior suites with sauna: **4** • Business suites: **4**
Connecting rooms for families: **4** • Air-conditioning, coffee and tea making facilities, TV, radio, safe, telephone.

GUEST SERVICES

Free Wi-Fi, Business Corner, laundry, transfer.

DISTANCE

28 km from Budapest Int’l Airport (Liszt Ferenc), 9 km from Keleti Railway Station, 3 km from city centre.

SPA, WELLNESS, FITNESS

Indoor swimming pool, hot water pools, jacuzzi steam room • sauna infra-sauna • salt cave • sun terrace
Cosmetics and hair salon • solarium • pedicure massages

DINING

Episode Restaurant
Yellow Bistro & Bar
Terrace
Room Service



FUNCTION ROOM	☼	Dimension (m)	Size (m²)	Theatre	Classroom	Banquet	U-shape	Reception	Boardroom	Standard
Episode Restaurant	☼	18 x 35 x 3,5	630	-	-	-	-	-	-	308
Helia Conference room	☼	ceiling height 3,9 m	360	400	200	180	50	300	-	-
Panorama	☼	14 x 10 x 3	140	100	60	80	35	90	40	-
Mercure	☼	14 x 10 x 3	140	100	60	80	35	90	40	-
Orion	☼	17 x 6 x 3	102	70	40	60	30	40	30	-
Uranus	☼	14 x 8 x 3	112	80	50	60	40	80	40	-
Saturnus	☼	7 x 6 x 3	42	20	10	-	14	-	14	-
Pluto	☼	5 x 4 x 3	20	-	-	-	10	-	10	-
Venus	☼	10 x 6 x 3	60	40	25	40	20	50	20	-
Mars	☼	6,5 x 6 x 3	39	20	10	-	14	-	14	-
"C" Lobby	☼	14 x 6 x 3	140	-	-	-	-	100	-	-
Novella	☼	6,7 x 6,7 x 3,2	38	-	-	-	15	-	12	-
Terrace			480	-	-	-	-	250	-	-

☼ Natural daylight.



DANUBIUS HOTEL ARENA

The secret to successful events is having your own professional event organiser!
Our meeting rooms can be divided flexibly, and we offer modern technology and top-quality service. Our experienced team does its very best for cater for all needs. It's no coincidence that the Arena regularly hosts conferences and corporate events and is a popular choice even for gala dinners and weddings.

A WINNING CONFERENCE HOTEL

- ✓ **In Pest's conference district, located close to Budapest's largest sports and events centres (BOK Hall, Papp László Budapest Sportaréna), and the international fair centre (HUNGEXPO Budapest Exhibition & Conference Center).**
- ✓ **Conveniently situated a few steps from the metro station, so the city's highlights are within easy reach.**
- ✓ **Work out in one of Danubius' best Premier Fitness Club.**
- ✓ **Ample car parking nearby.**

GUEST ROOMS

Number of rooms: **379**
Superior twin and double rooms, Standard twin and double rooms. Standard triple rooms, 2 accessible rooms.
Rooms for smokers, hypoallergenic and connecting rooms are available.
Air-conditioning, hairdryer, flat-screen TV, telephone, laptop-size built-in safe.

GUEST SERVICES

Free Wi-Fi throughout the hotel, Business Centre, laundry, car park and garage nearby, rent-a-car, transfer, gift shop.

FITNESS & WELLNESS

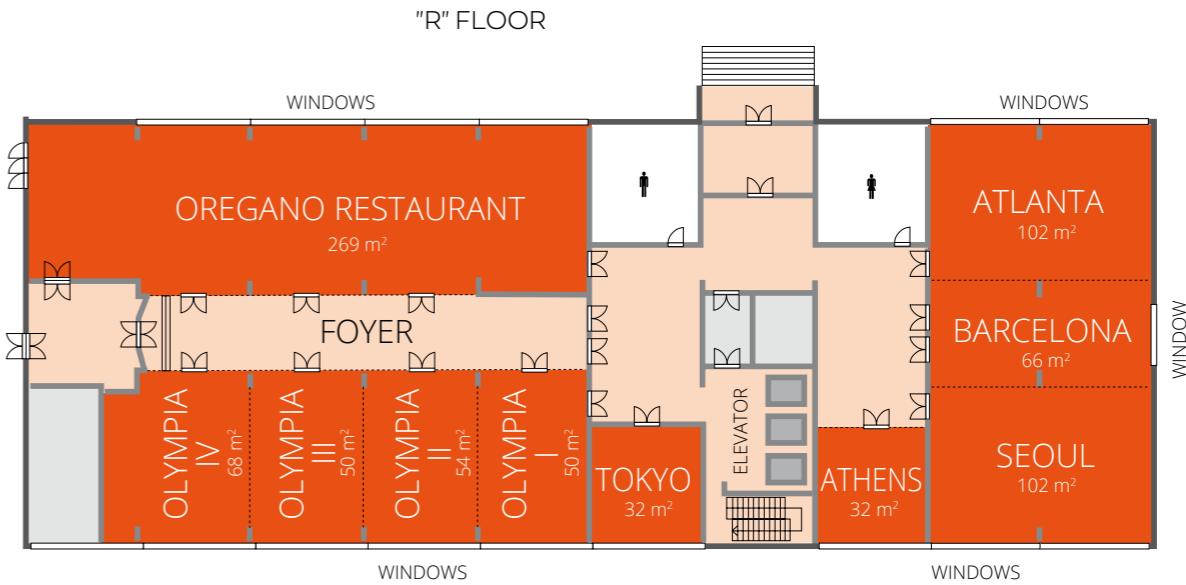
Fitness room and aerobic studio. Swimming pool, Finnish and infra saunas, solarium, massages and beauty salon.

DINING

Oregano Restaurant
Coffee Shop
Room Service

DISTANCE

20 km from Budapest Int'l Airport (Liszt Ferenc), 2 km from Keleti Railway Station, 4 km from city centre, 1.5 km from HUNGEXPO Budapest Exhibition & Conference Center and 0.5 km from BOK Hall and Papp László Budapest Sportaréna the new Puskás Ferenc Stadion. 6 km from the Groupama Aréna and 8 km from the Tüskecsarnok.



FUNCTION ROOM	☼	Dimension (m)	Size (m²)	Theatre	Classroom	Banquet	U-shape	Reception	Boardroom
Atlanta	☼	12 x 8.5 x 3	102	100	70	80	32	80	30
Barcelona	☼	12 x 5.5 x 3	66	50	30	48	24	30	22
Seoul	☼	12 x 8.5 x 3	102	100	70	80	32	80	30
Atlanta+Barcelona / Seoul+Barcelona	☼	12 x 14x3	168	160	110	130	-	120	-
Atlanta+Barcelona +Seoul	☼	12 x 22.5 x 3	270	220	180	210	-	210	-
Athens	☼	6 x 5.3 x 3	32	30	18	20	15	20	16
Tokyo	☼	6 x 5.3 x 3	32	30	18	20	15	20	16
Olympia I.	☼	5.7 x 8.8 x 2.8	50	50	30	36	24	40	22
Olympia II.	☼	6.2 x 8.8 x 2.8	54	50	30	36	24	40	22
Olympia III.	☼	5.7 x 8.8 x 2.8	50	50	30	36	24	40	22
Olympia IV.	☼	7.9 x 9 x 2.8	68	60	50	54	30	50	22
Olympia I.+II.+III.+IV.	☼	25.5 x 8.8 x 2.8	222	220	180	170	70	200	70
Olympia I.+II.+III.+IV. + foyer	☼	25.5 x 8.8 x 2.8 + 23.3 x 3.5 x 2.8	222+80	350	250	300	70	300	-
Oregano restaurant	☼	23 x 11.7 x 2.5	269	-	-	160	-	200	-

☼ Natural daylight.



DANUBIUS HOTEL HUNGARIA****

If you're looking for an event venue in Budapest that's easily reachable by participants coming from outside Budapest as well as from the capital, then Hotel Hungaria City Center is the hotel to choose! The majority of our conferences rooms have natural daylight and can be flexibly arranged. Combine this with the expertise of our professional team for a successful conference, meetings, gala dinners, Christmas parties, weddings or social events up to 500 pax.

- ✓ **The largest hotel in the country with a hundred year-old tradition.**
- ✓ **On Budapest's main artery, with easy access from all directions.**
- ✓ **In the city's business & cultural centre, just a two-minute walk from Keleti Railway Station.**

GUEST ROOMS

Number of rooms: **468**
Standard twin and double and triple rooms, Superior twin and double and triple rooms, Family rooms for 4 pax, Junior Suite and Suite rooms, rooms for smokers are available.
Air-conditioning, telephone, flat screen TV.
Superior rooms with a higher degree of comfort.
Safe deposit box and coffee and tea making facilities.

GUEST SERVICES

Free Wi-Fi throughout the hotel, Internet Corner, laundry, gift shop, rent-a-car, airport-shuttle service, safe, transfer, hotel garage for 35 cars and nearby outdoor bus parking.

DINING

Beatrix Restaurant
Lobby Bar
Room Service

DISTANCE

16 km from Budapest Int'l Airport (Liszt Ferenc), 0.5 km from Keleti Railway Station and 2 km from the city centre.
4 km from HUNGEXPO Budapest Fair Centre and 2 km from BOK Hall and Papp László Budapest Sportaréna the new Puskás Ferenc Stadion.
5 km from the Groupama Aréna and 6 km from the Tüskecsarnok.



A GREAT WAY TO MAKE THE MOST OF YOUR STAY



FUNCTION ROOM	⚙	Dimension (m)	Size (m²)	Theatre	Classroom	Banquet	U-shape	Reception	Boardroom
Phönix		15 x 11 x 2.5	165	140	100	70	50	100	60
Vincellér		10 x 10,6	110	50	40	-	25	-	20
Amfora		10 x 4 x 3	40	30	15	20	20	-	20
Baross	⚙	-	179	80	40	80	30	140	30
Restaurant Beatrix		16 x 30 x 3.3	480	-	-	300	-	420	-
Budapest	⚙	10.4 x 11.4 x 2.8	115	40	30	40	25	80	25
Wien	⚙	6.9 x 11.4 x 2.8	76	20	15	30	15	40	15
Budapest+ Wien	⚙	17.3 x 11.4 x 2.8	191	60	50	80	50	120	50
Conference room I.	⚙	10.3 x 16.5 x 2.8	170	140	100	60	50	150	50
Conference room II.	⚙	17.2 x 16.5 x 2.8	285	260	180	140	40	250	90
Conference room I+II.	⚙	27.5 x 16.5 x 2.8	455	500	280	290	100	400	140
Gallery		10 x 4 x 3	40	30	15	20	20	-	20
Imperial I.	⚙	11.85 x 6.6 x 3	78	60	40	30	30	50	30
Imperial II.	⚙	3.45 x 4.9 x 3	17	15	10	10	10	-	10
Imperial I+II.	⚙	15.3 x 6.6 x 3	95	80	50	40	30	60	50

⚙ Natural daylight.



DANUBIUS HOTEL GELLÉRT

Hotel Gellért is one of just a handful of venues in Budapest that combines a yesteryear ambience with the modern facilities required for a successful event. The hotel has a variety of halls suitable for conferences as well as indoor and outdoor spaces perfectly suited for receptions or social gatherings.

- ✓ **Impressive Art-Nouveau building with rich history, set in a picturesque location on the Danube riverbank, at the foot of Gellért Hill.**
- ✓ **Shares its premises with the world-famous Gellért Baths.**
- ✓ **Superb catering in two restaurants and a charming coffee shop serving classic pastries. Our summer terraces are ideal for summer parties.**
- ✓ **Traditional, welcoming hospitality and attentive service since 1918.**

GUEST ROOMS

Number of rooms: **234** • Double rooms: **140**
Single rooms: **85** • Suites: **9**
TV, telephone, radio, minibar, bathrobe, hairdryer.

GUEST SERVICES

Free Wi-Fi throughout the hotel, laundry, hotel safe, car park (100 metres from the hotel).

LEISURE & SPA

Guests have access to the city's most beautiful thermal pools at the adjacent Gellért Bath via a private entrance:

- Indoor swimming pool, jacuzzi, thermal baths, sauna, steam room, outdoor swimming pool with wave bath, outdoor thermal bath

The hotel grants a discount off the daily ticket price to hotel guests during the hotel stay.

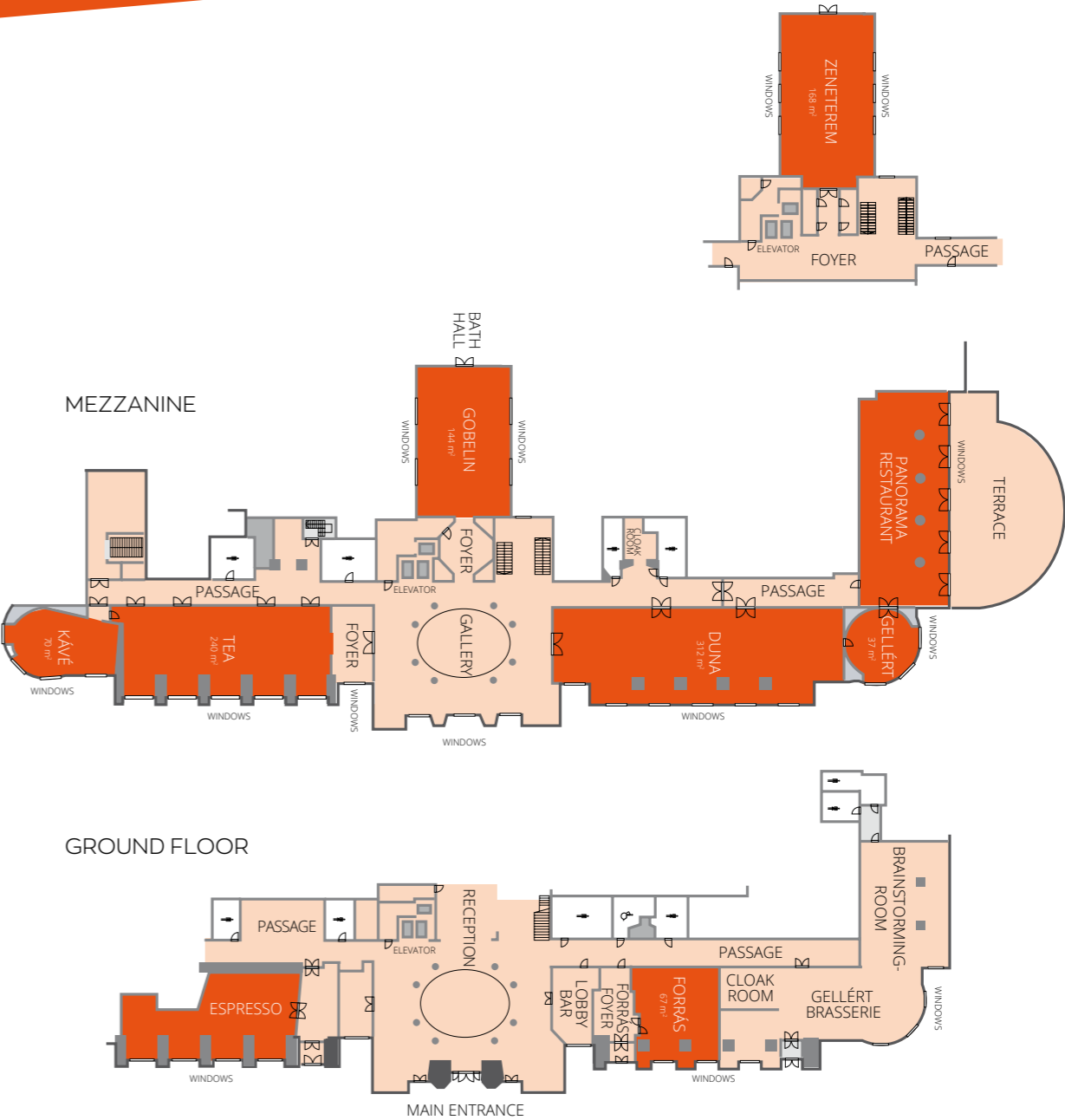
DINING

Panorama Restaurant and Terrace
Gellért Brasserie
Gellért Espresso
Drink Bar
Room Service

DISTANCE

22 km from Budapest Int'l Airport (Liszt Ferenc),
7 km from Keleti Railway Station, 1 km from city centre.

ART-NOUVEAU ELEGANCE – WORLD-FAMOUS SPA



FUNCTION ROOM	☼	Dimension (m)	Size (m²)	Theatre	Classroom	Banquet	U-shape	Reception	Boardroom
Forrás*	☼	9.50 x 7 x 3.70	70	60	50	-	30	-	22
Bath Hall	☼		600	-	-	270	-	450	-
Duna	☼	32 x 9.5 x 4.60	312	-	150	160	-	200	-
Gellért	☼	Circular shape	37	-	-	10	20	20	-
Gobelin*	☼	16 x 9 x 4.60	144	180	100	80	45	120	40
Tea*	☼	24 x 9.5 x 4.60	240	240	120	120	70	150	70
Kávé*	☼	11 x 7 x 4.60	70	40	35	30	25	40	25
Zene	☼	16 x 9 x 6	144	150	100	80	40	120	45
Panorama Restaurant	☼	25 x 10 x 4.60	205	-	-	90	-	120	-
Gellért Brasserie *	☼	7.6 x 10 x 3.70	180	-	-	80	-	100	-

* temperature controlling / ☼ Natural daylight.



DANUBIUS HOTEL ASTORIA****

If you choose to host your professional or social event at our hotel, you can be sure that all your guests will arrive on time! The Astoria's central location, elegant function rooms and top-quality service all make it a firm favourite for conferences and events, as well as other occasions.

- ✔ **Tradition and style in the heart of Budapest.**
- ✔ **Enchanting hotel that combines timeless elegance with a full range of up-to-date amenities.**
- ✔ **Ideal venue for small incentive groups.**
- ✔ **The most charming classical accommodation in the city, and a leading hotel in the city since 1914.**
- ✔ **Central location, excellent public transport facilities.**

GUEST ROOMS

Number of rooms: **138** • Double rooms: **123**
Single rooms: **7** • Junior Suites: **5** • Suites: **3**
Connecting rooms are available.
Air-conditioning, soundproof windows, telephone, TV , safe, hairdryer.

GUEST SERVICES

Free Wi-Fi throughout the hotel, Internet Corner, hotel safe, laundry, airport shuttle, rent-a-car, gift shop.

DINING

Café Astoria Restaurant
Room Service

DISTANCE

Central location, 20 km from Budapest Int'l Airport (Liszt Ferenc),
3 km from Keleti Railway Station.



A CLASSIC VENUE FOR 21ST-CENTURY BUSINESS



FUNCTION ROOM	⚙	Dimension (m)	Size (m²)	Theatre	Classroom	Banquet	U-shape	Reception	Boardroom
Podium Salon		19 x 12 x 3.5	228	90	70	40	20	100	20
Green Salon		16 x 5 x 3.5	80	80	50	10	40	60	46
Károlyi Room		8 x 5.4 x 3.5	43	25	20	-	20	30	18
Boardroom		6 x 4.5 x 3.5	27	15	10	10	15	-	10
Empire Room		19 x 14 x 4.6	266	70	-	150	-	200	-
Café Astoria Restaurant		19 x 12 x 5.1	228	-	-	-	-	-	20

⚙ Natural daylight.



CHECK OUR VIRTUAL TOUR ON [DANUBIUSHOTELS.COM/ASTORIA](https://danubiushotels.com/astoria)

Would you like to organise a spectacular event that people will be talking about for years to come? With its sumptuous atmosphere, impeccable standards of service and capacity for up to 600 people, the newly renovated Hilton Budapest makes a perfect venue for the most exclusive business events, receptions, family gatherings and weddings.

IN THE MIDST
OF HISTORY

- ✓ **Set in the heart of the Royal Castle District a few steps from UNESCO World Heritage sites.**
- ✓ **Magnificent view of the River Danube, the city of Budapest and the romantic, cobblestoned streets of old Buda.**
- ✓ **LÁNG Bistro & Grill – brand new bistro restaurant with 16 panoramic windows overlooking the city skyline, offering 'Fresh from the Grill' choices and traditional Hungarian specialities complemented with a wide array of local and International wines, catering for up to 200 guests.**

GUEST ROOMS

Number of rooms: **322** • Guest rooms: **298** • Suites: **24**

Accessible rooms: **2**

Executive floor with Executive Lounge.

Rooms with Danube view.

Non-smoking rooms only.

Air-conditioning, safe, 42 inch HD TV, media hub, bedside USB ports, iron, ironing board, hairdryer, minibar, tea and coffee making facilities, walk-in shower, designer bathroom amenities, bathrobe, slippers.

GUEST SERVICES

Free Wi-Fi throughout the hotel, Business Centre, laundry, gym, sauna, garage, parking.

DINING

LÁNG Bistro & Grill

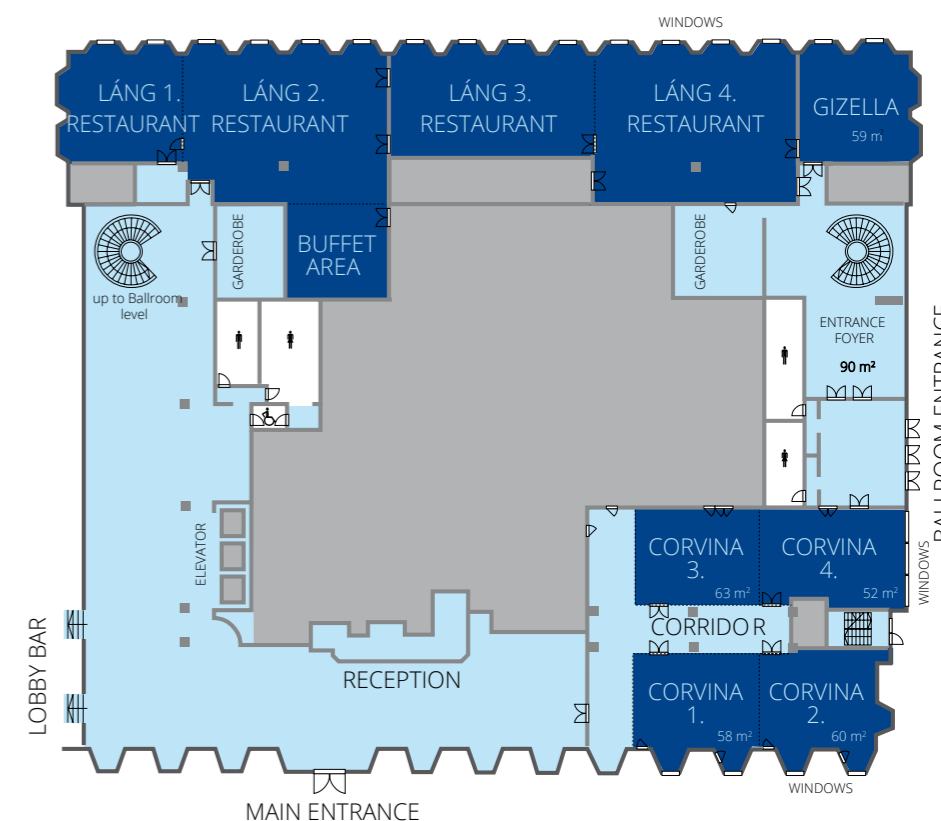
Lobby Café & Bar

Room Service

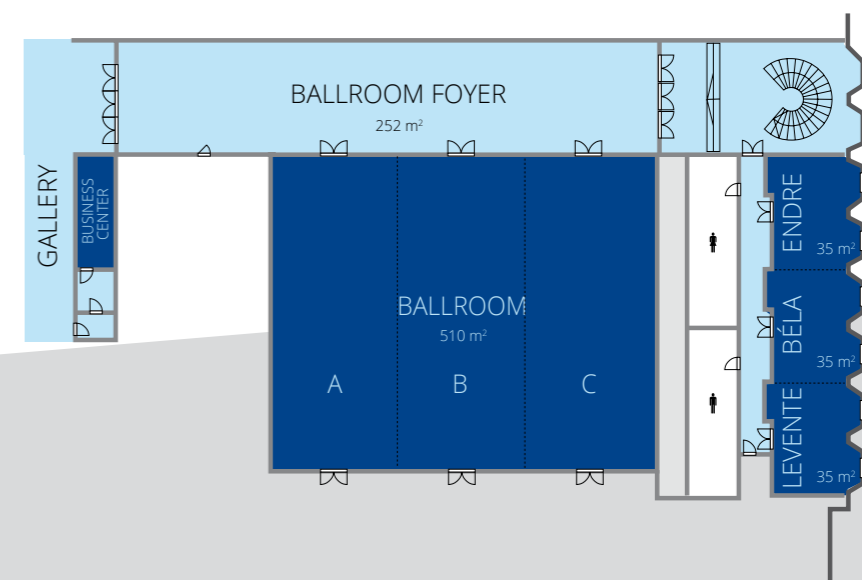
DISTANCE

3 km from downtown, 25 km from Budapest Int'l Airport
(Liszt Ferenc), 5.5 km from Keleti Railway Station.

GROUND FLOOR
LOBBY LEVEL

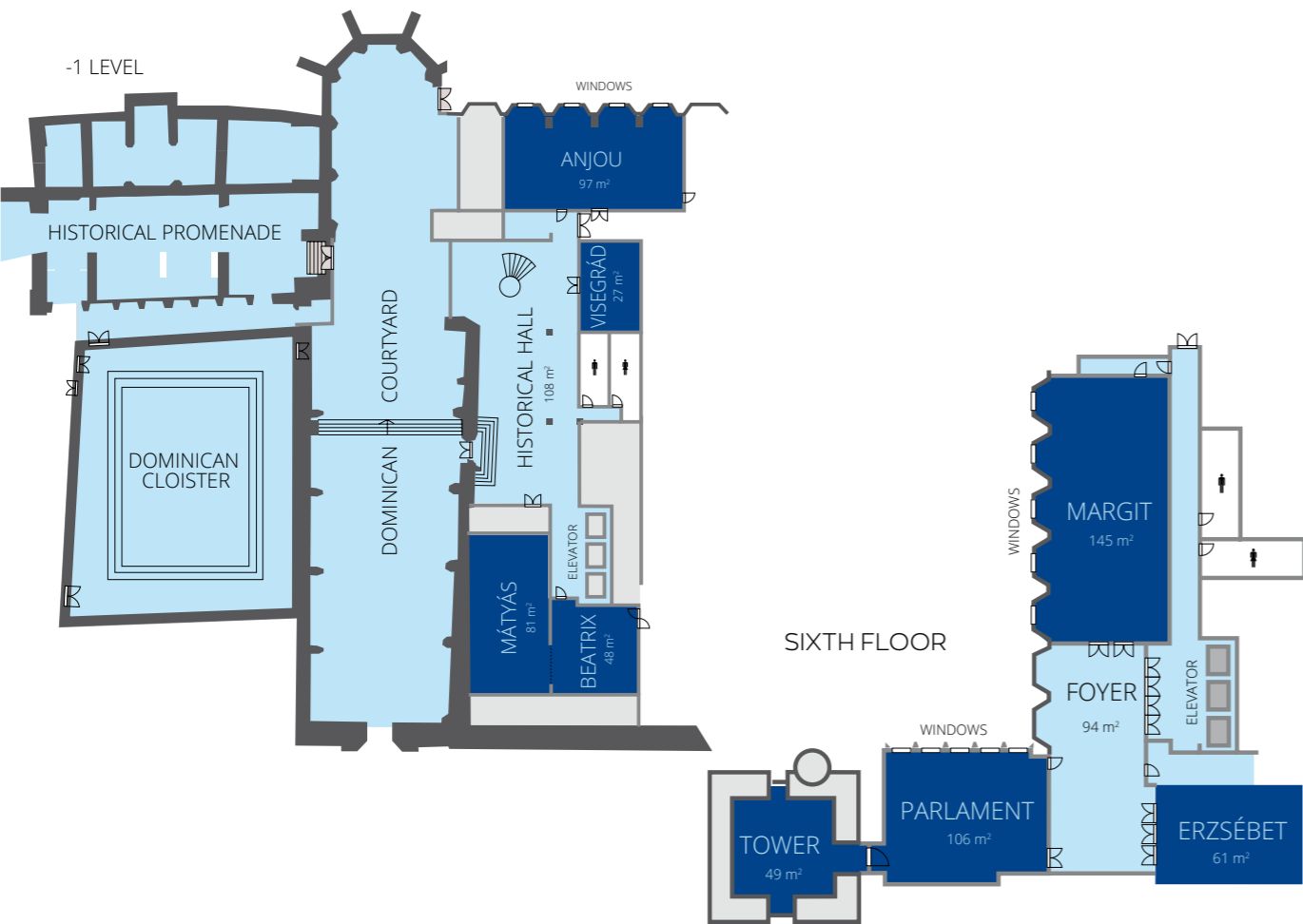


FIRST FLOOR
BALLROOM LEVEL

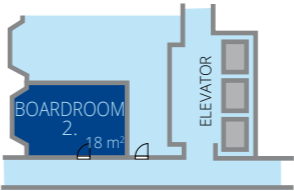


HILTON BUDAPEST

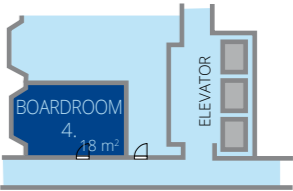
LOWER-GROUND FLOOR
HISTORICAL LEVEL



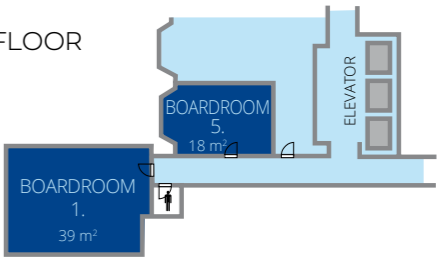
SECOND FLOOR



FOURTH FLOOR



FIFTH FLOOR



FUNCTION ROOM	⚙	Dimension (m)	Size (m²)	Theatre	Classroom	Banquet	U-shape	Reception	Boardroom
Anjou	⚙	14.2 x 6.8 x 2.8	97	110	60	70	36	80	42
Visegrád		4.2 x 6.4 x 2.7	27	20	-	-	-	-	12
Mátyás		13 x 6.3 x 2.4	81	85	60	70	36	80	42
Beatrix		6.9 x 7 x 2.4	48	40	24	30	18	30	24
Gizella	⚙	8 x 8 x 3	59	40	18	40	15	30	18
Corvina 1	⚙	8.9 x 7.1 x 2.7	63	60	40	50	20	40	22
Corvina 2	⚙	8.4 x 6.2 x 2.7	52	45	28	40	20	30	22
Corvina 3		9 x 6.4 x 2.7	58	50	28	40	20	30	22
Corvina 4	⚙	10.4 x 5.8 x 2.7	60	50	28	30	22	30	22
Corvina 1+2+3+4	⚙	17.9 x 20.6 x 2.7	333	-	-	250	-	210	-
Corvina 1+2	⚙	17.4 x 6.2 x 2.7	108	130	80	90	44	80	50
Corvina 3+4	⚙	19.8 x 6.3 x 2.7	126	132	66	80	50	70	50
Ballroom A		8.1 x 20.4 x 4.4	165	210	99	150	57	150	63
Ballroom B/C		8.4 x 20.4 x 4.4	171	225	132	150	57	160	63
Ballroom A+B		16.5 x 20.4 x 4.4	337	417	231	300	72	350	90
Ballroom B+C		16.8 x 20.4 x 4.4	343	417	231	300	72	350	90
Ballroom A+B+C		25 x 20.4 x 4.4	510	660	363	480	87	500	114
Endre / Béla / Levente	⚙	7.2 x 4.8 x 2.7	35	30	24	20	15	20	18
Endre + Béla / Béla + Levente	⚙	14.4 x 4.8 x 2.7	69	66	36	50	-	40	36
Endre + Béla + Levente	⚙	21.6 x 4.8 x 2.7	104	105	64	80	-	70	60
Boardroom 1	⚙	5.5 x 7.1 x 2.4	39	-	-	-	-	-	14
Boardroom 2/4/5	⚙	5.2 x 3.5 x 2.3	18	-	-	-	-	-	10
Margit	⚙	18.4 x 5.4 x 3.5	145	120	66	100	51	80	54
Parlament	⚙	11.2 x 9 x 3.5	106	75	54	60	30	50	36
Erzsébet		12.2 x 5 x 3.5	61	60	33	40	33	30	36
Tower		7 x 7 x 3.5	49	20	27	40	18	20	24
OTHER									
Historical Hall	⚙	15 x 7.2 x 2.9	108	-	-	-	-	-	-
Ballroom Foyer	⚙	35.5 x 6.5 x 2.4	252	-	-	-	-	150	-
Entrance Foyer	⚙	15 x 6 x 2.9	90	-	-	-	-	80	-
Margit Foyer	⚙		94	-	-	-	-	-	-
Dominican Courtyard – Open Air		61 x 11	671	-	-	200	-	400	-
Dominican Cloister – Open Air		16 x 12	192	-	-	60	-	80	-
Historical Promenade	⚙	-	-	-	-	-	-	80	-
LÁNG 1	⚙	-	-	-	-	32	-	-	-
LÁNG 2	⚙	-	-	-	-	54	-	-	-
LÁNG 3	⚙	-	-	-	-	56	-	-	-
LÁNG 4	⚙	-	-	-	-	60	-	-	-
LÁNG 1+2+3+4	⚙	-	-	-	-	202	-	-	-



RADISSON BLU BÉKE HOTEL

BUDAPEST ****SUPERIOR

Are you looking for a hotel in Budapest that will impress your clients with its historical sites, buzzing energy, design award winner interior and service culture? Be our guest at the renewed Radisson Blu Béke Hotel, Budapest in the heart of the city where tradition meets contemporary design. The more than 100 years history with the sophisticated elegance of the renewed Superior rooms and flexibility of its meeting center with the latest AV technology.

- ✔ **Located in the heart of the pulsating metropolis, on the Grand Boulevard. Public transport is on the doorstep and few steps from the famous Andrásy Street, Ruin Pubs and Danube River. Stroll along the “Broadway of Pest”: theatres, museums, cafés and fine restaurants just a stone’s throw away.**
- ✔ **Wonderful combination of tradition, style and culture complemented by modern facilities.**
- ✔ **Natural light in majority of the meeting rooms, flexible airwall technology, Radisson Meetings Concept with dedicated event managers who cover everything from the planning down to the very last detail.**

GUEST ROOMS

Superior and Premium Rooms, Suites and accessible rooms.

Air-conditioning, Nespresso coffee, smart TV, free magazines and newspapers. Refresh and recharge while sleeping on our high quality mattresses with personalized pillow options for a great sleep experience. Invigorating showers, luxuriously soft towels and unique amenities will help you unwind at the end of the day.

GUEST SERVICES

Free Wi-Fi throughout the hotel, Business Centre Services, gift shop, laundry and dry-cleaning service, garage.

One Touch Service. Radisson Rewards for Business Program for meeting planners.

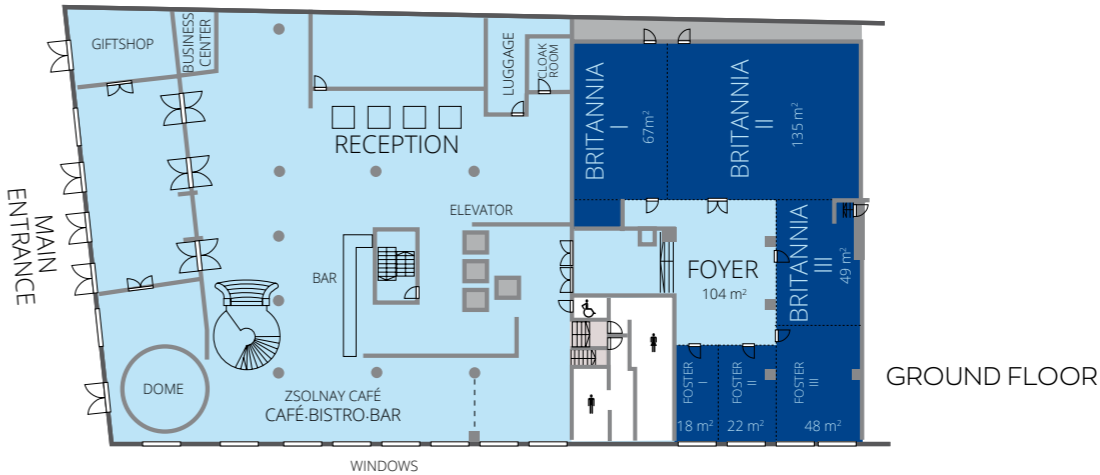
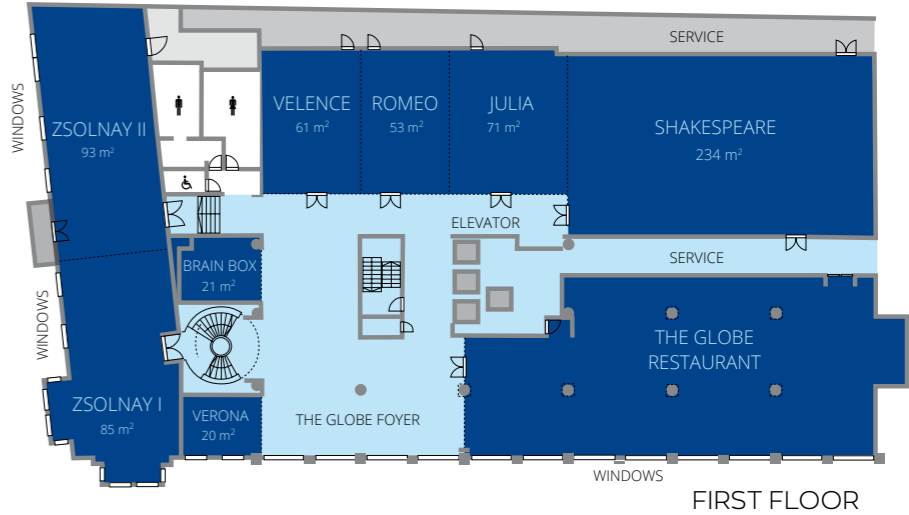
DINING

Zsolnay Café
The Globe Restaurant
Room Service

DISTANCE

23 km from Budapest Int’l Airport (Liszt Ferenc),
500 m from Western Railway Station,
300 m to M1 and M3 metro lines.
Find your favourite jogging path on BluRoutes Application on the Margaret Island.

STAY IN STYLE
IN BUDAPEST



FUNCTION ROOM	⚙	Dimension (m)	Size (m²)	Theatre	Classroom	Banquet	Cabaret	U-shape	Boardroom	Reception
Velence	⚙	9,6 x 6,4 x 3,3	61	50	30	40	28	30	36	40
Romeo	⚙	9,6 x 5,6 x 3,3	53	40	30	30	21	28	32	35
Julia	⚙	9,6 x 7,8 x 3,3	71	60	45	40	28	30	36	40
Shakespeare	⚙	19,8 x 11,7 x 3,3	234	200	165	150	105	58	68	130
Romeo + Julia	⚙	9,6 x 13,4 x 3,3	124	90	72	80	56	46	52	80
Velence + Romeo + Julia	⚙	9,6 x 19,7 x 3,3	185	150	108	120	84	54	60	100
Velence + Romeo	⚙	9,6 x 11,9 x 3,3	114	80	63	80	56	46	52	70
Julia + Shakespeare	⚙	11,7 x 27,6 x 3,3	305	250	210	190	133	64	70	150
Romeo + Julia + Shakespeare	⚙	9,6/14,4 x 33,2 x 3,3	358	280	240	220	154	-	-	250
Velence + Romeo + Julia + Shakespeare	⚙	9,6/11,7 x 39,8 x 3,3	419	330	273	300	210	-	-	300
Zsolnay I	⚙	14,7 x 5,8 x 3,9	85	64	42	30	21	24	28	60
Zsolnay II	⚙	15,9 x 5,8 x 3,9	93	72	48	40	28	28	32	70
Zsolnay I + Zsolnay II	⚙	30,6 x 5,8 x 3,9	179	120	84	70	49	48	52	100
Verona	⚙	4,2 x 4,9 x 3	20	15	-	10	7	-	10	-
Brain Box	⚙	4,3 x 5,0 x 3	21	15	-	10	7	-	10	-
Britannia I	⚙	10,4 x 4	66,5	65	36	30	21	26	32	40
Britannia II	⚙	13 x 10,4 x 4	135,2	130	81	100	70	48	54	100
Britannia III	⚙	8,6 x 5,8 x 4	50	40	30	30	21	16	20	40
Britannia I+II	⚙	19,4 x 10,4 x 4	201,7	180	130	130	91	56	62	140
Britannia I+II+III+Foyer	⚙	19,4 x 19 x 4	358,29	240	-	180	126	-	-	250
Foster I	⚙	6 x 3 x 2,3	18	10	9	10	7	10	12	10
Foster II	⚙	6 x 3,6 x 2,3	21,6	10	9	10	7	10	12	10
Foster III	⚙	7,3 x 6,6 x 2,3	48,2	30	24	20	14	16	20	20
Foster I+II	⚙	6 x 6,6	39,6	20	18	20	14	14	16	25
Foster II+III	⚙	7,3 x 10,2 x 2,3	69,8	30	20	30	21	16	20	30
Foster I+II+III	⚙	13,2 x 7,3 x 2,3	87,8	40	28	40	28	27	30	50
Britannia III + Foster III.	⚙	15,9 x 6,6 x 4	98,2	50	36	50	35	32	36	50
Britannia II+III+ Foster I+II+III+ Foyer	⚙		377	220	-	150	105	-	-	310
Britannia I+II+III+ Foster I+II+III+ Foyer	⚙		443,5	300	-	220	154	-	-	350





DANUBIUS **AV**

TECHNICALLY OUTSTANDING!

The **Danubius AudioVisual** full-featured conference and event technology service allows you to choose state-of-the-art technical equipment tailored to your needs.



maximum
effectiveness



unmatched
service



affordable
prices

Explore the *countryside*

BALATONFÜRED

BÜK

GYŐR

HUNGARY

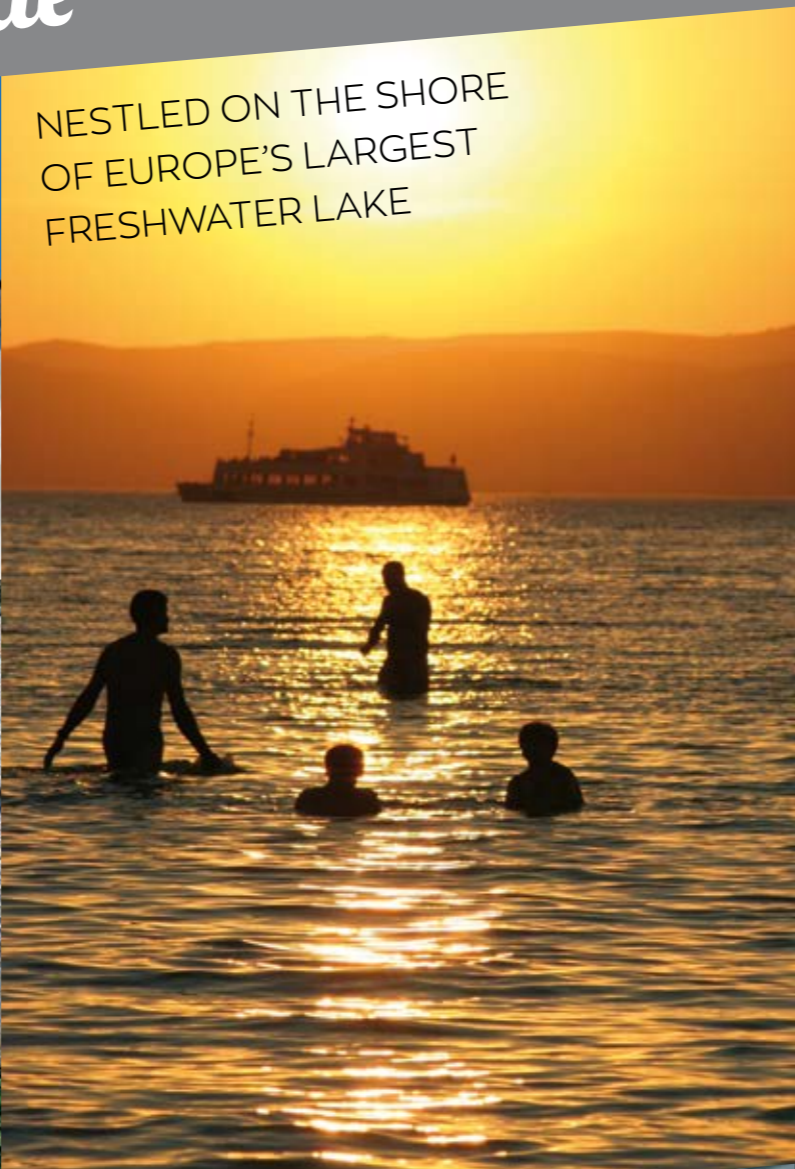
A GRACEFUL SPA TOWN LOVED BY POETS AND ARTISTS

NESTLED ON THE SHORE
OF EUROPE'S LARGEST
FRESHWATER LAKE

VISIT PANNONHALMA ABBEY,
A UNESCO WORLD HERITAGE SITE

ATMOSPHERIC
BAROQUE TOWN

LOVELY HISTORIC CHURCHES
AND PALACES



DANUBIUS HOTEL RÁBA***

Danubius Hotel Rába, located in the heart of the city, is the ideal venue for business events, training sessions and anniversary banquets. Its four exceptionally well-equipped conference rooms can be set up in various ways and can accommodate up to 120 people. For team-building events, we also have a selection of additional activities available.

THE MIDWAY MEETING POINT

- ✓ 1.5-hour drive from Budapest and Vienna, and an hour's drive from Bratislava.
- ✓ At the very Baroque centre of Győr, 'the meeting place' to go to for locals.
- ✓ For a rich cultural experience, take a break at Hotel Rába.
- ✓ The Belgian Restaurant & Pub is a stylish venue for weddings, company events and other occasions.

GUEST ROOMS

Number of rooms: **155** • Double rooms: **93**
Single rooms: **27** • Suites: **14** • Business Suites: **21**
Connecting rooms are available.
Rooms with bath, hairdryer, telephone, TV and air-conditioning. All suits have a spacious bathroom and a separate work/study room.

GUEST SERVICES

Free Wi-Fi throughout the hotel, laundry and dry cleaning, hotel safe, telefax.

LEISURE FACILITIES

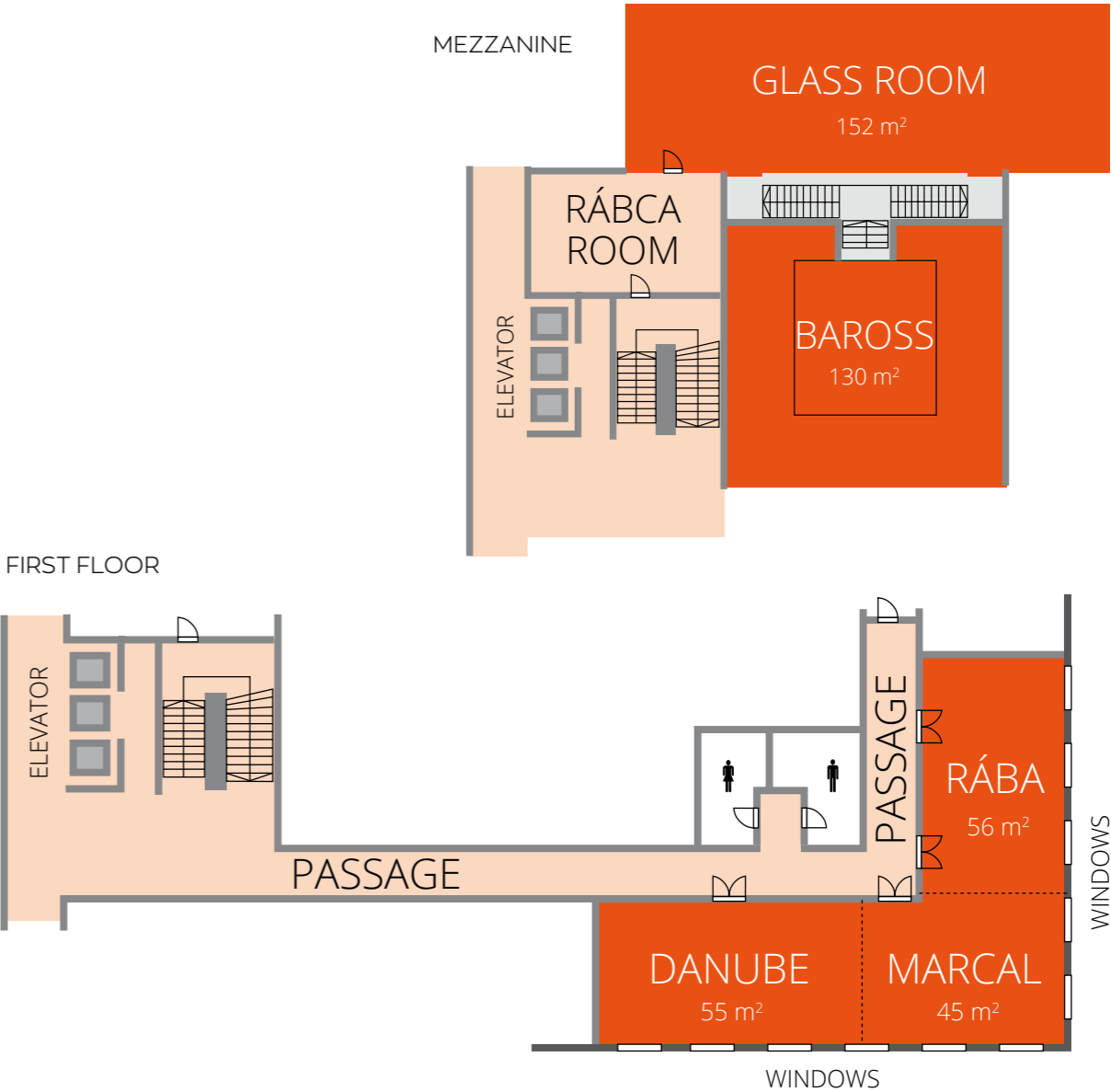
Sauna, solarium, massages, fitness facilities.
Nearby: Győr's thermal spa and adventure bath, watersports facilities.

DINING

Belgian Restaurant & Pub
Room Service

DISTANCE

300 m (5-minute walk) from the railway station and the coach and bus terminal, 125 km from Budapest (direct access from Motorway M1), 125 km from Vienna and 95 km from Sopron.



FUNCTION ROOM	☼	Dimension (m)	Size (m²)	Theatre	Classroom	Banquet	U-shape	Reception	Boardroom
Glass room		21.2 x 7.2 x 3.2	152	120	70	80	60	80	70
Baross room		12.1 x 10.9 x 5	130	120	60	70	60	70	50
Danube room*	☼	10.7 x 5.1 x 2.6	55	50	30	35	35	35	40
Marcal*	☼	7.5 x 6.1 x 2.6	45	30	20	25	20	25	25
Rába*	☼	9.2 x 5.1 x 2.6	47	40	25	30	30	30	30
Danube + Marcal + Rába connecting			156	110	75	75	-	110	-

☼ Natural daylight. * are air-conditioned rooms

DANUBIUS HOTEL BÜK****

Our easily accessible hotel, in a beautiful natural setting, is a successful and popular venue for events in Bükfürdő. Whether it's for an all-day team-building programme or an all-inclusive conference, participants can enjoy some well-deserved rest and recreation away from the hustle and bustle of city life.

BUSINESS – NATURALLY

- ✓ **Located in the famous spa resort at the foot of the Alps.**
- ✓ **Choose from a range of activities: swimming, adventure pools, tennis, mini-golf, table-tennis, garden chess, bowling, pool tables, Nordic Walking, pétanque and e-scooter hire**

GUEST ROOMS

Double rooms: **188** • Single rooms: **4** • Suites: **5** •
Superior rooms: **40** • Executive rooms: **109**
Rooms for disabled guests • Anti-allergy rooms •
Connecting rooms
Air-conditioning, bathrobe, bath, balcony, hairdryer,
telephone, radio, TV, Wi-Fi

GUEST SERVICES

Free Wi-Fi throughout the hotel, laundry, souvenir
shop, car park.

SPA, WELLNESS, FITNESS

- Indoor swimming pool, outdoor swimming pool, Jacuzzi, steam room, sauna, partly indoor and partly outdoor adventure pool. New adventure pool with water-drift corridor, water spouts, waterfall and underwater geyser
- Indoor children's adventure pool
- Spa Centre.
- Fitness studio, gym.
- Garden, sunbathing area.
- Emporium Wellness & Beauty salon.
- Use of all sports facilities included in room price.

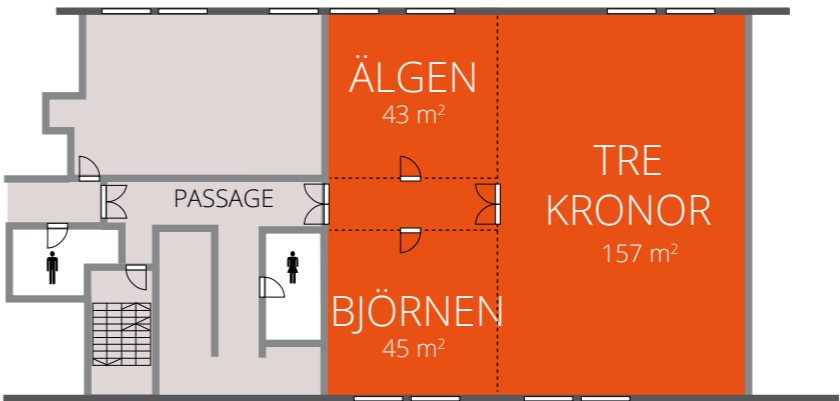
DINING

Nils Holgersson Restaurant with terrace
Aphotek Drink Bar, Linné Saloon with terrace

DISTANCE

25 km from Austrian border, 120 km (1.5-hour drive)
from Vienna, 245 km (2.5-hour drive) from Budapest
Int'l Airport and 45 km from Sopron.

FIRST FLOOR



FUNCTION ROOM	☼	Dimension (m)	Size (m²)	Theatre	Classroom	Banquet	U-shape	Reception	Boardroom
Älgen	☼	6.8 x 6.2 x 3.1	43	30	18	15	10	12	12
Björnen	☼	6.8 x 6.2 x 3.1	45	40	24	20	15	18	15
Tre Kronor	☼	10.3 x 15.5 x 3.1	157	150	73	120	30	70	35
Älgen+Björnen + Tre Kronor	☼	15.5 x 17.1 x 3.1	256	240	130	180	-	120	60

☼ Natural daylight.

DANUBIUS HOTEL ANNABELLA***SUPERIOR

Looking for a Balatonfüred venue for your team-building event? Our experienced team will be happy to assist you in putting together various activities to be held on the hotel premises or in the surrounding area. Our hotel stands out among Balatonfüred's conference venues, with a maximum capacity up to 300 pax, modern AV equipment and professional onsite staff to support you throughout your event.

- ✓ **Easy reach on M7 motorway (1.5-hour from Budapest).**
- ✓ **Plan your meeting in a quiet ambience at Lake Balaton.**
- ✓ **On the famous lakeside promenade beside the 'Hungarian sea'.**
- ✓ **Enjoy panoramic views of the lake and the picturesque village of Tihany.**

GUEST ROOMS

Number of rooms: **389** • Standard rooms: **193**
Superior rooms: **191** • Suites: **5**
Connecting rooms are available.
Balcony, bath, telephone, TV. Air-conditioning.

GUEST SERVICES

Parking lot for cars and coaches, free Wi-Fi, souvenir shop, laundry, safe, transfer.

LEISURE FACILITIES

Outdoor swimming pool, indoor swimming pool, sauna, solarium, massages.
Hairdresser, manicure, pedicure.
Windsurfing, private beach with sports facilities, rent-a-bike. Facilities for riding and tennis nearby.

DINING

Annabella Restaurant with Terrace
Lobby Bar

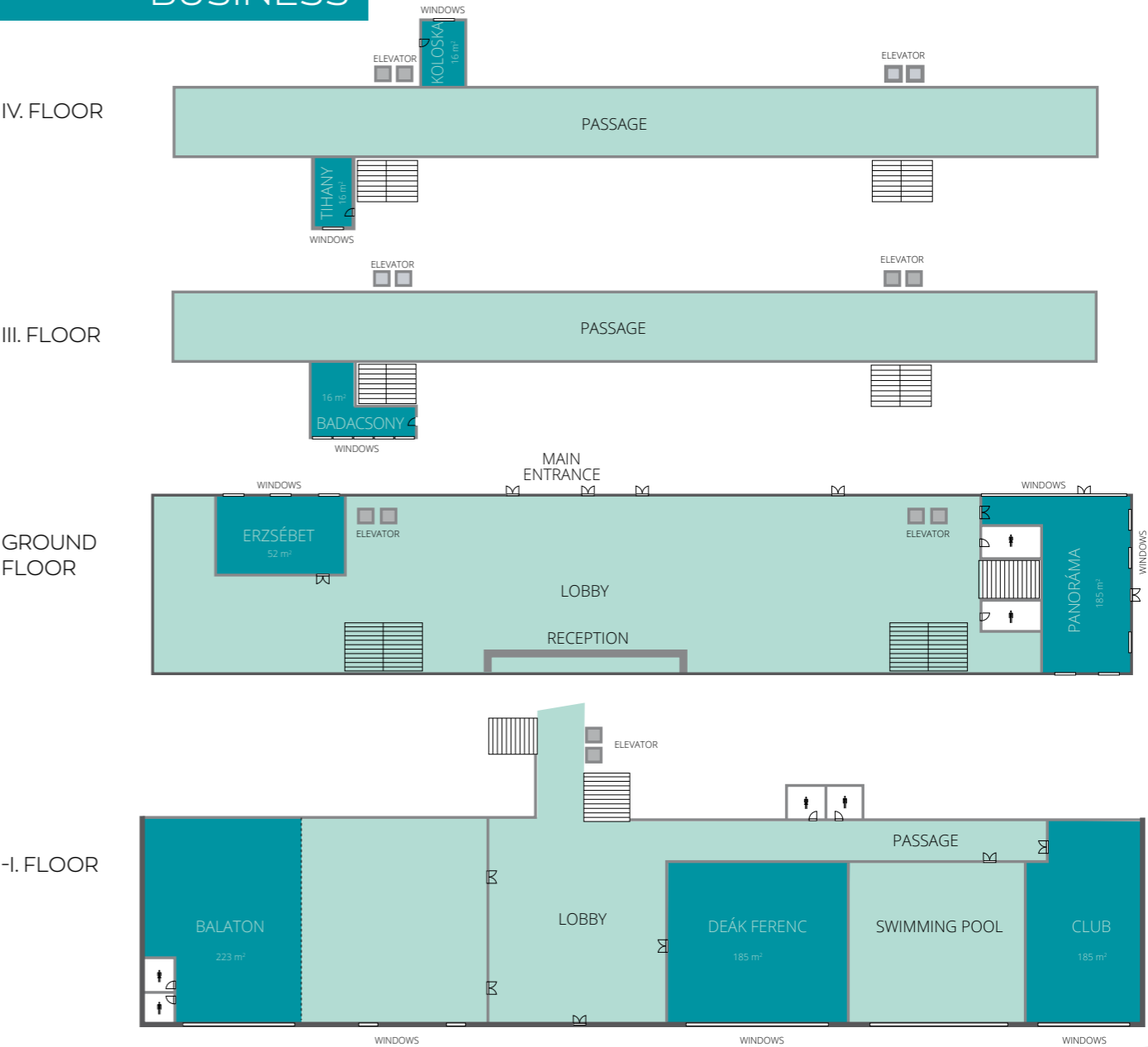
DISTANCE

80 km from Fly Balaton Airport, 160 km from Budapest Int'l Airport (Liszt Ferenc), 200 km from Vienna Airport and Bratislava Airport.

planandmeet

meetings and events
danubius

BRING SUNSHINE
TO YOUR
BUSINESS



FUNCTION ROOM		Dimension (m)	Size (m²)	Theatre	Classroom	Banquet	U-shape	Reception	Boardroom
Balaton*	⚙	12.4 x 18 x 3	223	250	150	150	70	250	-
Club*	⚙	10.3 x 18 x 3	185	100	80	100	50	250	-
Deák Ferenc*	⚙	10.3 x 18 x 3	185	250	150	150	70	250	-
Erzsébet*	⚙	6.2 x 8.4 x 3.3	52	30	24	-	20	-	30
Panorama*	⚙	10.3 x 18 x 3	185	100	50	120	25	200	-
Koloska	⚙	6.4 x 2.5 x 2.5	16	20	12	-	-	-	-
Tihany	⚙	6.4 x 2.5 x 2.5	16	20	12	-	-	-	-
Badacsony	⚙	6.4 x 2.5 x 2.5	16	20	12	-	-	-	-

⚙ Natural daylight. * are air-conditioned rooms



DANUBIUS HOTEL MARINA*** SUPERIOR

The hotel's event rooms are ideal for business trainings, meetings and smaller conferences. Are you planning a team-building programme? Including its huge grounds, the hotel is offering a variety of fun and enjoyable activities to keep your delegates busy during their stay. Make your stay at Balaton one to remember and stand out!

- ✔ Located in a vast green park directly on the lake shore, with 300 m of private beach.
- ✔ Huge garden suitable for organising team-building programmes for up to 500 people.
- ✔ Beautiful views of the lake and the Benedictine Abbey on top of the Tihany peninsula.
- ✔ All-inclusive – price covers all your food and beverages.
- ✔ A range of activities to keep you fit, including table-tennis, badminton, skittles and beach volleyball.

GUEST ROOMS

HOTEL MARINA - MAIN BUILDING

Number of rooms: **301** • Superior rooms: **277** • Superior tower suites: **24**

Some rooms with lake view, suites with balcony.

All rooms with air-conditioning, telephone, refrigerator, LCD TV, free Wi-Fi.

HOTEL MARINA - LIDO

Number of rooms: **48** • Twin rooms: **12** • Suites: **34** •

Accessible suites: **2**

All Lido rooms with air-conditioning, telephone, refrigerator, LCD TV, free Wi-Fi, balcony.

Each suite comprises 2 rooms, bathroom, extra toilet.

GUEST SERVICES

Parking facilities for cars and coaches (supervised), free Wi-Fi, souvenir shop, laundry, safe, transfer, rent-a-car.

LEISURE FACILITIES

Swimming pool, sauna.

Outdoor children's adventure pool

Rent-a-bike, beach volleyball, skittle alleys, table tennis, football court, windsurfing

Nearby: tennis, riding and waterskiing

Hairdresser, massage.

DINING

All-Inclusive Buffet Restaurant

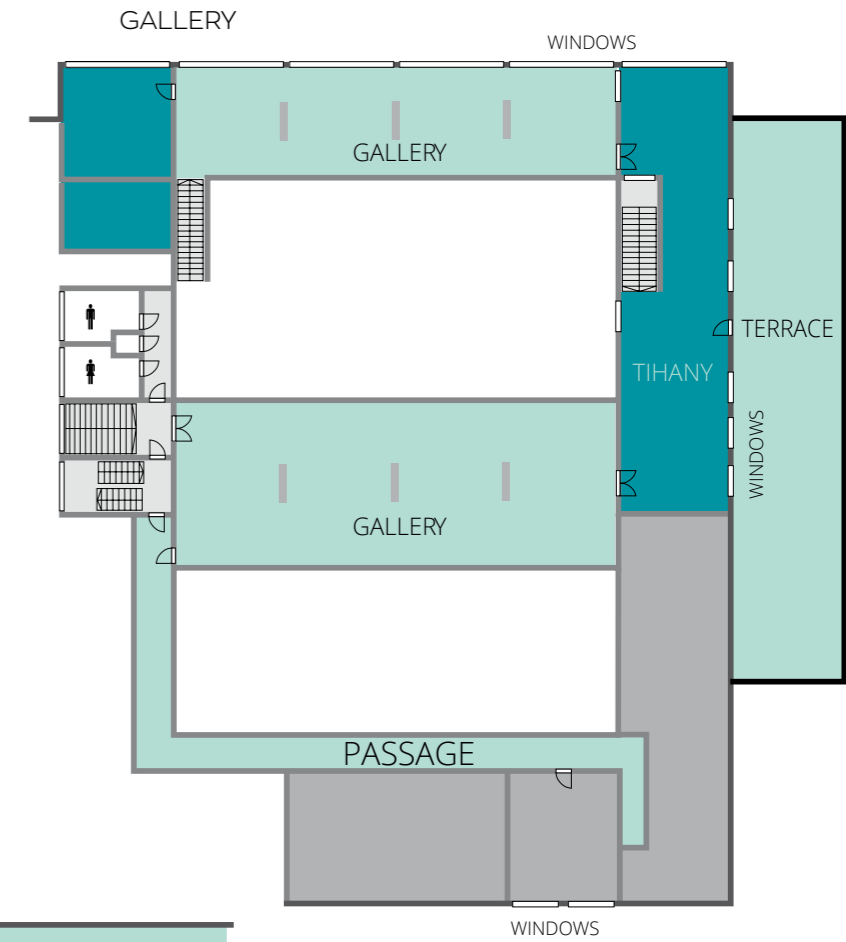
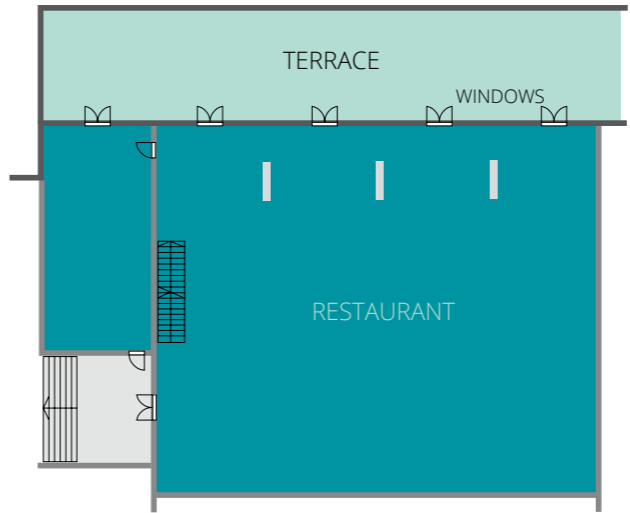
Beach Restaurant

Drink Bar

LET'S MEET ON THE BEACH!



GROUND FLOOR



FUNCTION ROOM	⚙	Dimension (m)	Size (m²)	Theatre	Classroom	Banquet	U-shape	Reception	Boardroom
Kelén*	⚙	4.8 x 21	100	100	60	-	30	-	30
Tihany	⚙	3 x 23.6 x 2.7	71	50	25	-	30	-	-

⚙ Natural daylight. * are air-conditioned rooms



Explore Great Britain

LONDON

DANUBIUS HOTEL REGENTS PARK****

If you come to London on business and stay at the Danubius Hotel Regents Park, you'll find everything you need for a successful trip with convenient transport links to all parts of the capital. Whether you are looking to organise a Conference, Training Course, Board Meeting or a Private Party the experienced Conference and Event Team will provide a bespoke service to suit your specific requirements and deliver a successful event in the contemporary meeting rooms. A dedicated Conference and Event team member will help you plan, coordinate and assist you during every stage of your event, anticipating your every need to ensure your event is one to remember.

- ✔ **A traditional and stylish four star hotel right next to the historic Regent's Park and overlooking Lord's Cricket Ground.**
- ✔ **Perfectly located, a short walk away from St John's Wood, the hotel offers all the facilities required for both business and leisure travellers alike.**
- ✔ **The hotel is located outside the London Congestion Charge Zone.**

GUEST ROOMS

The Danubius Hotel Regents Park offers 360 modern and well-equipped bedrooms including Twins, Superior, Executive, Suites, Family rooms and the newly refurbished Deluxe bedrooms and Suites. The Hotel also has two disabled bedrooms with roll-in showers.

HOTEL SERVICES

24 hour Room Service • 24 hour Reception & Concierge
Onsite Car Parking (chargeable) • Fitness Zone • Business Centre
Laundry Service (chargeable) • Complimentary Wi-Fi
Disable Access

DINING

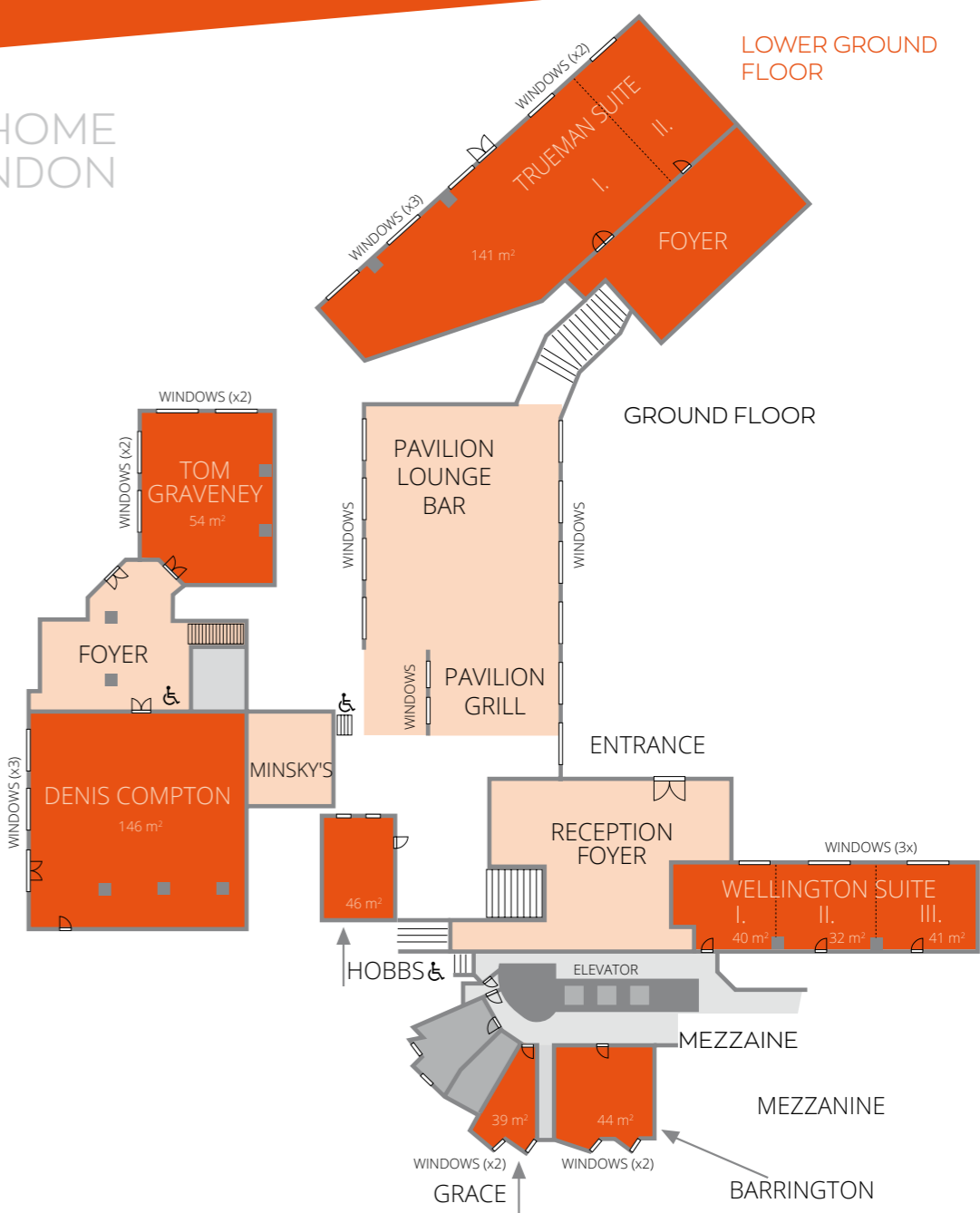
Pavilion Grill & Bar
Minsky's Restaurant

DISTANCE

Less than 10-minute walk from St. John's Wood Tube Station, 15-minute walk from Baker Street Tube Station and 7 minutes in a Taxi from Paddington Station for the Heathrow Express.
There is a bus stop opposite the hotel for direct link to Stansted and Luton Airports. Nearby Motorway (A40).



YOUR HOME
IN LONDON



FUNCTION ROOM	☀	Dimension (m)	Size (m²)	Theatre	Banquet	Cabaret	Classroom	Boardroom	U-shape
Denis Compton	☀	12 x 12.1 x 2.9	146	150	120	85	95	40	40
Tom Graveney	☀	5.7 x 9.4 x 2.9	54	35	30	25	18	20	20
Trueman Suite	☀	8 x 17.6 x 3.1	141	130	80	70	80	40	40
Trueman 1	☀	8 x 14.1 x 3.1	113	90	60	50	50	30	30
Trueman 2	☀	8 x 3.5 x 3.1	28	25	20	15	16	16	-
Wellington 1	☀	5.2 x 7.5 x 2.3	40	30	10	12	12	16	14
Wellington 2	☀	5.2 x 6 x 2.3	32	30	10	12	12	16	14
Wellington 3	☀	5.2 x 7.7 x 2.3	41	30	10	12	12	16	14
Wellington Suite	☀	5.2 x 21.2 x 2.3	112	90	30	36	45	40	35
Barrington	☀	5.5 x 8 x 2.4	44	40	20	20	22	20	16
Grace	☀	6.1 x 6.4 x 2.3	39	-	-	-	-	12	-
Hobbs	☀	8.5 x 5.5 x 2.5	46	-	-	-	-	14	-

☀ Natural daylight. All rooms are air-conditioned

